

The framework of the Bridges program includes education in Social Personal Skills and Career Experience.

Instruction in Social Personal Skills allows our students to gain knowledge and to practice:

- Appropriate personal behavior
- Communication
- Conflict resolution
- Self-Responsibility
- Interpersonal problem solving
- Personal problem solving
- Use of leisure time

Career Experience enables our Bridges students to acquire the knowledge and skills in the following:

- Develop and apply employability skills
- Describe rights, benefits, and responsibilities of employment
- Demonstrate workplace competencies
- Follow health and safety requirements
- Training in a variety of in-school and community work settings

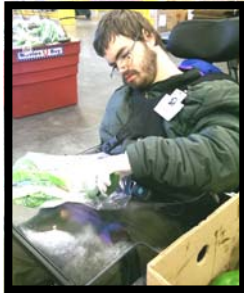
Parent Involvement

Bridges needs parent/guardians involvement and support.

Parent support and involvement is simple and easy through informal lines. Open lines of communication are enhanced by phone calls, emails, and the use of the daily communication log.

Parents/Guardians are encouraged to make visits to the school outside the annual IEP meeting and to become engaged in PTA, Parent Connect, Parent Trainings, and other school based events.

Parental involvement is critical to insuring the student's success in achieving his/her highest possible potential.



Multi-Tiered System of Support (MTSS)

MTSS incorporates a multi-tiered approach to academic and behavioral interventions in the following fashion:

- Individually focused
- Collaborative efforts between student, teacher, behavior staff, and Administration
- Focused on the behavioral and cognitive abilities of the student
- Frequent documentation, review, and modifications as needed for curriculum and achievement

Insuring maximum learning both functionally and behaviorally is a major focus of Bridges.

Celebrating Student Success

Positive behavior supports are an important factor in celebrating student success. Some of the ways Bridges celebrates student success includes:

- Verbal Praise
- Token economy systems
- Student Recognition Ceremonies
- Multiple and varied leisure activities
- Recognition in the Magnolia Mustang Newsletter

Student Assessment

Assessment drives learning and is integrated within the learning process. Assessments include:

- Tracking progress of the IEP goals
- Consistent usage of the Work Maturity Skills Checklist
- Teacher-made informal assessments of the Course Standards

By including students in the assessment process, they have the opportunity to learn a variety of skills that will allow them to check their own progress throughout their lives.



MAGNOLIA SCHOOL

MAGNOLIA SCHOOL

BRIDGES



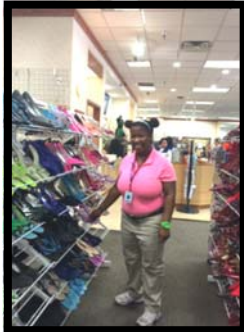
W. Thomas Oldroyd - Principal
Denise Calio - Assistant Principal
Wendy Lee - Assistant Principal

1900 Matterhorn Drive
Orlando, FL 32818
Tel: 407.296.6499

Bridges at Magnolia was specifically designed to provide intensive training and instruction to students who have met their academic requirements and need work-related skills which prepares them for life at home, in the community, and in the work place.

- Curriculum focuses on functional living and employment skills.
- The goal is viable employment skills for every student upon leaving public school.
- Developing job skills, work habits, and appropriate social skills is a continual process.

Students will acquire the knowledge and skills necessary for increased independence, self-determination, vocational/career interests, and daily living skills.



Community Based Vocational Education

On campus



With 12 on-campus work sites, this program offers more than any other school in Orange County. Working under the direct supervision of a CBVE Teacher or Job Coach, on-site students:

- Receive simulated career experience
- Work fewer or more flexible hours
- Follow all general guidelines as off-campus

Our on campus programs consists of:

- Student Services - office assistance
- Garden/Grounds- landscaping and vegetable garden
- Flower Shop - house and flowering plants
- Recycling - can crushing and paper shredding
- Magnolia South - assembly tasks
- Gift Shop - hand-made cards, baths salts, flower bombs, and bows
- Hotel Magnolia – hotel, restaurant, and grocery
- Thrift Shop - organize, display, and marketing skills
- The Bistro - basic food certification and cooking skills
- Print Shop - embossing and print shop skills
- Herb Shop – fresh/dried herbs and packets
- Custodial — basic duties around school

Community Based Vocational Education

Off campus

The CBVE program is a vocational education and training program that provides Bridges students an opportunity to work in the community.

- Students identify career interests, assess employment skills, practice training needs, and develop employment skills and attitudes necessary for paid employment.
- Students receive transportation to and from the vocational training site.
- Students work approximately two hours per day, two to four days per week.

Vocational training sites currently in place are:

- Embassy Suites Jamaican Court
- Embassy Suites International Drive
- Burlington and Marshalls
- Second Harvest and YMCA
- Bill Frederick Park and Azteca D'Oro
- Publix and Bravo
- Quest-North and South
- Primrose

